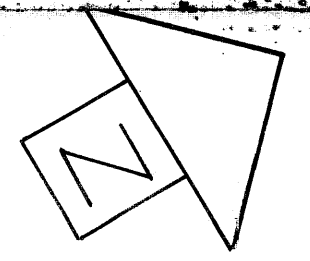
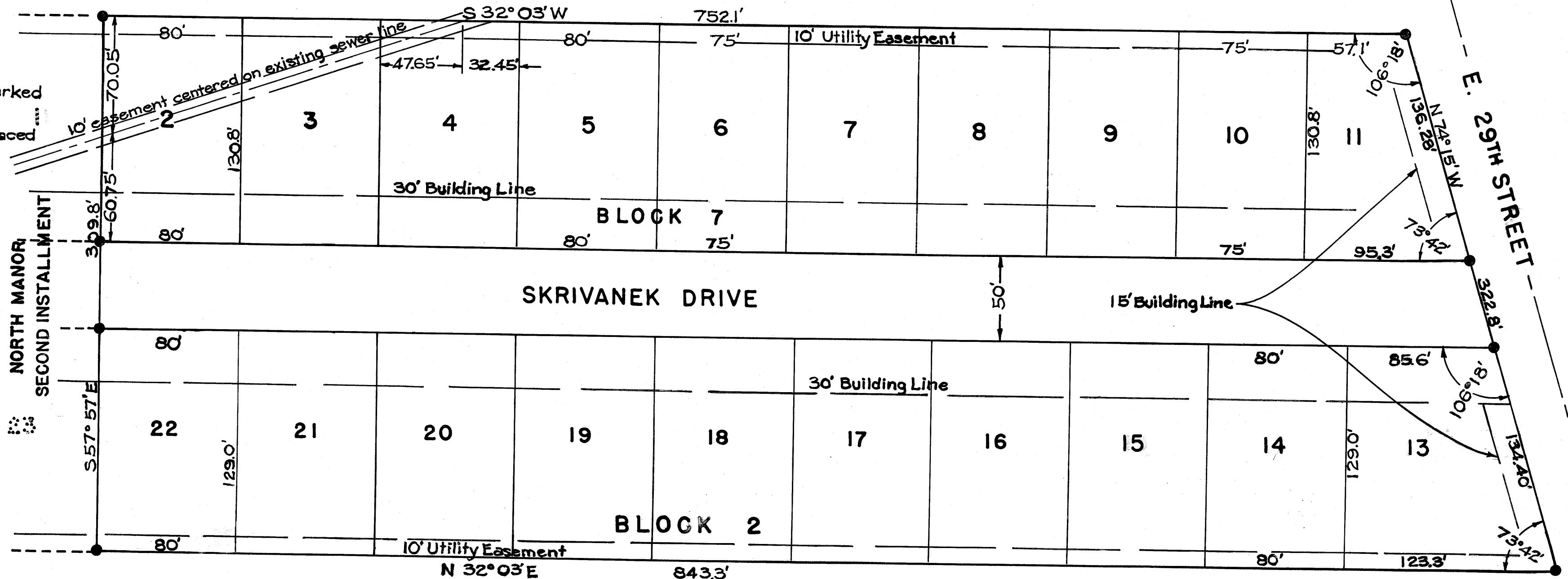


FRANK J. MATOUS TRACT



NOTE

All property corners are marked by 1/2" round iron rods. Concrete monuments are placed as shown by ●. All angles are 90° unless otherwise noted. All radii are 25' unless otherwise noted. All lot dimensions same as adjoining lot unless otherwise noted.



on land base
WD 10/4/62

NORTH MANOR - FIRST INSTALLMENT

NORTH MANOR
(THIRD INSTALLMENT)

BRYAN, TEXAS

DR.: VOL. 225, PG. 339

OCT., 1962

SCALE: 1" = 50'

257